

Injury attendances to Trafford General Hospital Emergency Department

October 2010 to September 2011

This report summarises recorded injury attendances to Trafford General Emergency Department (ED) between October 2010 and September 2011.

Between October 2010 and September 2011 there were 55,917 injury attendances to Trafford General ED. Females accounted for half (50%) of all injury attendances. The month with the highest injury attendances was July (n=5,198) with February (n=4,041) having the lowest attendances ([Figure 1](#)). The majority of attendances were recorded as other injury (95%). Road traffic collisions (RTC) accounted for 2% of all injury attendances, as did sports injury ([Table 1](#)).

For all injuries the highest proportion of attendances were for persons aged 20 to 34 (21%) and 5 to 19 years (19%) ([Figure 2](#)). Nearly four in ten (39%) of RTC attendees were aged 20 to 34 years. Nearly half (48%) of sports injury attendees were aged 5 to 19 years ([Figure 3](#)).

[Table 2](#) shows the ethnicity of attendees to Trafford General ED. Almost nine in ten (86%) were white.

The disposal of a patient can give an indication of the severity of the injuries sustained. Over two-fifths (42%) of attendees were discharged, nearly four in ten (36%) were referred and 13% were admitted to hospital ([Table 3](#)). Over two-thirds (68%) of RTC attendees were discharged. Over half (54%) of sports

injury attendees were discharged, while over a quarter (27%) of deliberate self-harm (DSH) attendees were admitted ([Table 4](#)).

[Table 5](#) shows the arrival methods of attendances at Trafford General ED. Over four-fifths (84%) of attendees arrived by other means, whilst 16% arrived by ambulance.

[Table 6](#) shows assault attendances to Trafford General ED. Seven in ten (70%) of assault attendees were male, and over two-fifths (41%) were aged 20 to 34 years. Almost a third (31%) of assault attendees arrived at the ED by ambulance, and three in ten (30%) of assault attendances occurred on weekend nights.

Figure 1: Trafford General ED: Total injury attendances by gender and month, October 2010 to September 2011

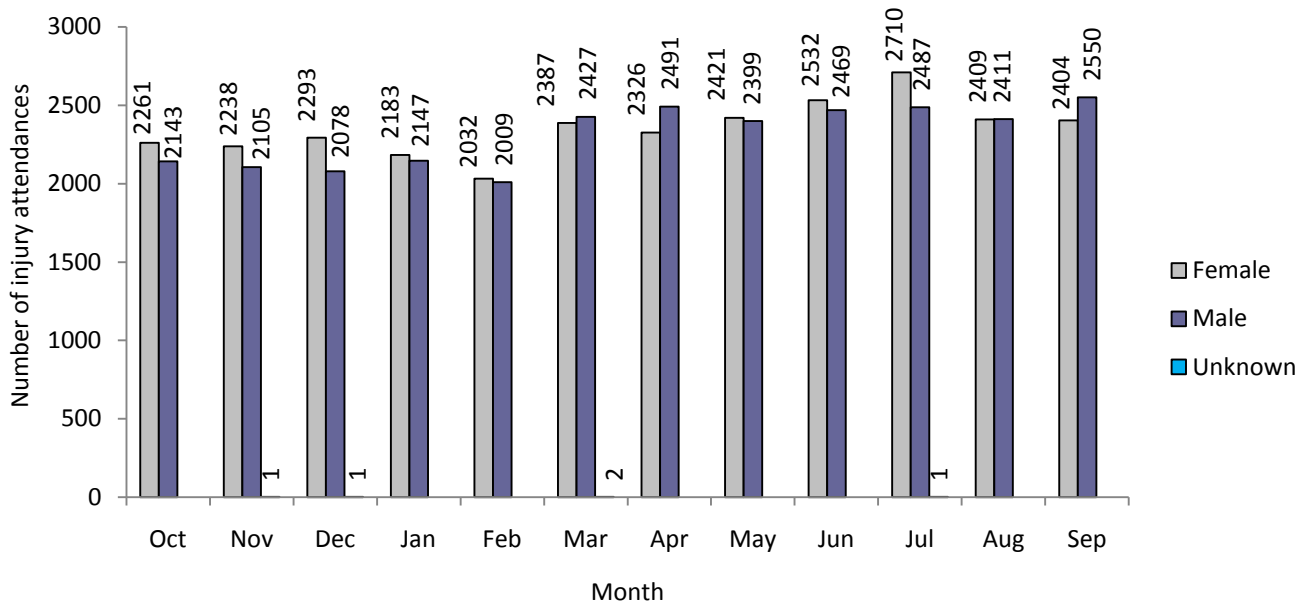


Table 1: Trafford General ED: Total injury attendances by injury group and month, October 2010 to September 2011*

Injury group	Oct	Nov	Dec	Jan	Feb	Mar	Apr	May	Jun	Jul	Aug	Sep	Total	%
Other injury	4130	4077	4166	4098	3831	4529	4531	4521	4808	4915	4590	4582	52778	95
RTC	118	118	130	95	97	119	116	131	80	94	85	92	1275	2
Sports injury	93	87	28	60	52	99	80	72	45	110	59	187	972	2
Assault	38	39	32	34	31	44	44	46	33	38	53	50	482	1
DSH	25	23	16	43	30	25	46	50	35	41	33	43	410	1
Total	4404	4344	4372	4330	4041	4816	4817	4820	5001	5198	4820	4954	55917	100

*Percentages may not total 100 due to rounding.

Figure 2: Trafford General ED: Total injury attendances by age group and month, October 2010 to September 2011

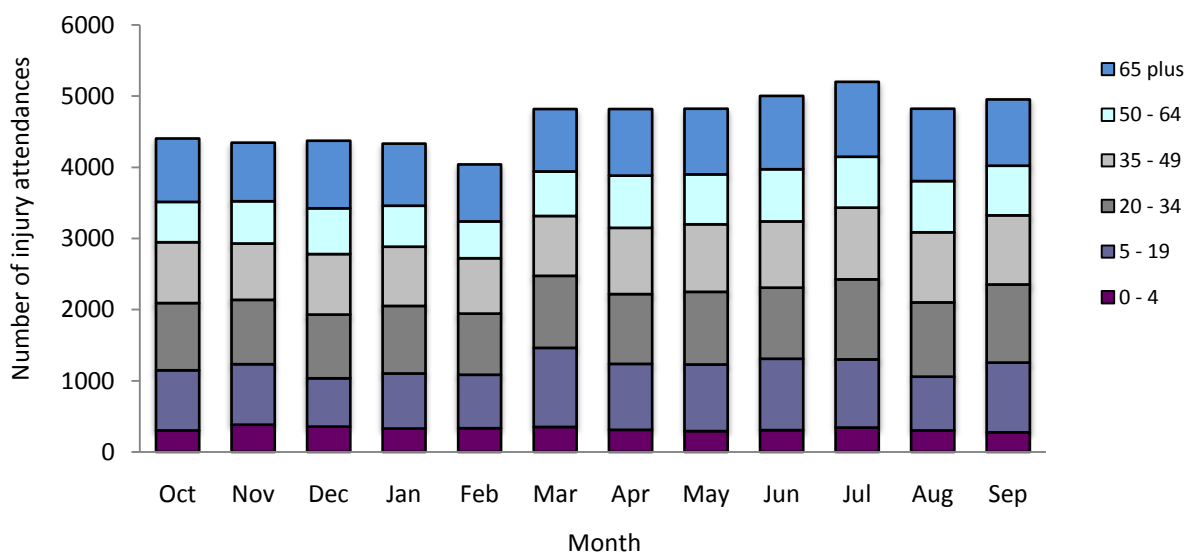


Figure 3: Trafford General ED: Total injury attendances by age group and injury group (excluding other injury), October 2010 to September 2011

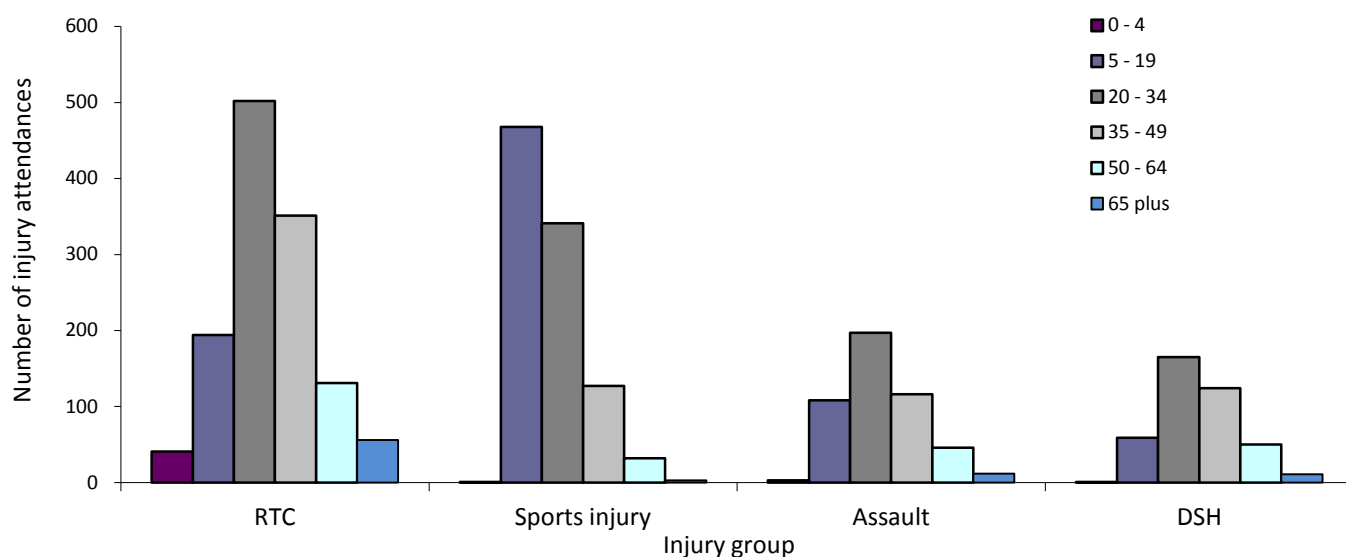


Table 2: Trafford General ED: Total injury attendances by ethnicity and month, October 2010 to September 2011^{12*}

Ethnicity	Oct	Nov	Dec	Jan	Feb	Mar	Apr	May	Jun	Jul	Aug	Sep	Total	%
White	3781	3683	3694	3647	3435	4123	4092	4112	4311	4465	4196	4310	47849	86
Not stated	151	164	192	172	108	144	134	138	142	201	154	170	1870	3
Pakistani	93	92	108	97	80	90	103	126	119	95	108	113	1224	2
Not known	93	99	74	85	129	144	154	129	76	44	39	36	1102	2
Any other ethnic group	57	82	83	80	86	70	81	91	80	95	72	57	934	2
Black	71	76	68	77	59	89	81	68	93	73	80	83	918	2
Indian	69	61	68	78	54	66	70	62	76	74	65	71	814	1
Mixed	51	51	42	56	53	53	68	59	61	89	75	77	735	1
Asian other	21	23	26	19	21	15	18	23	24	34	11	20	255	0
Chinese	10	7	***	***	9	***	***	***	***	21	14	12	158	0
Bangladeshi	7	6	***	***	7	***	***	***	***	7	6	5	58	0
Total	4404	4344	4372	4330	4041	4816	4817	4820	5001	5198	4820	4954	55917	100

*Percentages may not total 100 due to rounding.

Table 3: Trafford General ED: Total injury attendances by method of disposal and month, October 2010 to September 2011^{3*}

Disposal	Oct	Nov	Dec	Jan	Feb	Mar	Apr	May	Jun	Jul	Aug	Sep	Total	%
Discharged	1999	1705	1824	1702	1720	1999	1913	2039	2089	2209	2013	1995	23207	42
Referral/ follow-up	1607	1672	1521	1720	1534	1812	1665	1619	1710	1776	1723	1793	20152	36
Admitted	575	655	689	642	534	599	571	570	596	577	569	557	7134	13
Other	223	312	338	266	253	406	668	592	606	636	515	609	5424	10
Total	4404	4344	4372	4330	4041	4816	4817	4820	5001	5198	4820	4954	55917	100

*Percentages may not total 100 due to rounding.

¹ Please note that all numbers less than five have been suppressed in line with patient confidentiality and if there is only one number <5 in a category then two numbers will be suppressed at the next level.

² White=Irish, British, other white background; Mixed = white and black, white and Asian, mixed any other; Black=African, Caribbean, other black.

³ Admitted=admitted to hospital/became a lodged patient of the same health care provider; Discharged=discharged - did not require any follow up treatment; Referral/follow-up=discharged - follow up treatment to be provided by GP, referred to ED clinic, referred to fracture clinic, referred to other out-patient clinic, referred to other health care professional; Other=died in department, left department before being treated, left department having refused treatment, other.

Table 4: Trafford General ED: Total injury attendances by method of disposal and injury group, October 2010 to September 2011*

Disposal	Assault		DSH		Other injury		RTC		Sports injury		Total	
	n	%	n	%	n	%	n	%	n	%	n	%
Discharged	202	42	43	10	21573	41	863	68	526	54	23207	42
Referral/follow-up	148	31	103	25	19224	36	322	25	355	37	20152	36
Admitted	32	7	111	27	6963	13	23	2	5	1	7134	13
Other	100	21	153	37	5018	10	67	5	86	9	5424	10
Total	482	100	410	100	52778	100	1275	100	972	100	55917	100

*Percentages may not total 100 due to rounding.

Table 5: Trafford General ED: Total injury attendances by mode of arrival and month, October 2010 to September 2011

Arrival mode	Oct	Nov	Dec	Jan	Feb	Mar	Apr	May	Jun	Jul	Aug	Sep	Total	%
Other	3678	3628	3580	3612	3332	4095	4074	4136	4278	4451	4068	4252	47184	84
Ambulance	726	716	792	718	709	721	743	684	723	747	752	702	8733	16
Total	4404	4344	4372	4330	4041	4816	4817	4820	5001	5198	4820	4954	55917	100

Table 6: Trafford General Hospital ED: Assault attendances by gender, mode of arrival, age group and day/time of attendance, October 2010 to September 2011*

Injury type	Assault attendees (n=482)		All injuries % (n=55,917)
	n	%	%
Gender			
Female	146	30	50
Male	336	70	50
Mode of arrival			
Ambulance	161	33	16
Other	321	67	84
Age group			
0 - 4	***	0	7
5 - 19	108	22	19
20 - 34	197	41	21
35 - 49	116	24	19
50 - 64	46	10	14
65 plus	***	2	20
Day & time			
Weekend nights**	147	30	6
Weekend days	106	22	20
Weekdays	229	48	73

* Percentages may not total 100 due to rounding.

** 8pm to 4am, Friday night/Saturday morning; Saturday night/Sunday morning; Sunday night/Monday morning.

Author: Ian Warren, Published: December 2011

For further information please contact: Centre for Public Health, Research Directorate, Liverpool John Moores University, 2nd Floor, Henry Cotton Building, 15-21 Webster Street, Liverpool, L3 2ET.

Tel: 0151 231 4513 or Email: i.j.warren@ljmu.ac.uk

Website: www.tiig.info (data requests should be made through the website)